

Battery Tensioner Tool Operating Manual



Battery tensioner, Battery 12V, Battery charger

Thank you for purchasing our battery powered tensioner designed and produced in Germany by Rothschenk. This tensioner was developed and manufactured according to our high standards for reliability, user friendliness and operator safety.

To reduce the risk of injury, please read and understand the operating instructions before using this product. The manufacturer reserves the right to make technical changes to the product at any time.

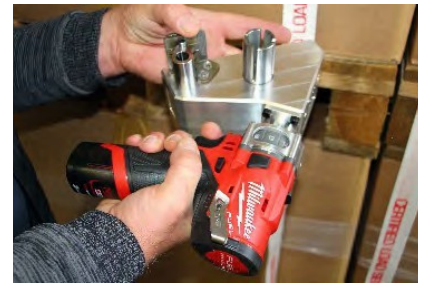
Instructions:



1. Use the rotary control to select the appropriate torque up to 500 daNj.



2. The selected torque level is displayed on the top of the device



3. If the clamping shoe on the device is closed, it must be opened before use.



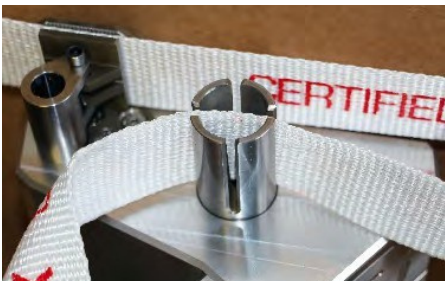
4. Open the clamping shoe on the device by pressing the right / left rotation from the right side. Activate the tensioner.



5. At a minimum, the opening of the clamping shoe must correspond to the thickness of the strap that will be used.



6. Attach the battery tensioner to the belt strap. Press the right / left rotation on the left and close the clamp shoe by operating the tensioner.



6. Guide the end of the strap to be tightened through the slotted shaft of the battery tensioner.



8. Operate the battery tensioner until the desired pre-tensioning force is achieved.



9. Open the clamping shoe again by pressing the right / left rotation on the right side of the battery tensioner.

Important Safety Information for the General Use of Battery-operated Devices:

Basic precautions, such as the following, should always be followed when using any electrical appliance to reduce the risk of fire, personal injury, or property damage.

1. No liability is accepted for improper use of the battery clamping device.
2. Do not leave the device with the battery connected. Remove the battery from the device when it is not in use.
3. Do not expose to moisture. Always store locked.
4. Do not use the device as a toy.
5. Use only as described in this manual.
6. Do not use the device if it is damaged.
7. Keep the air inlets away from objects that may block airflow.
8. Keep long hair, fingers, or body parts away from the vents and moving parts.
9. Only use the charger approved by the manufacturer of the battery to charge the battery.
10. Avoid unintentional starting of the battery tensioner.
11. Do not reach between the lashing straps / clasp when tightening.
12. Structural changes to the battery clamping device are not permitted.
13. Battery chargers are to be checked regularly according to DGUV regulation 3.
14. The devices are not suitable for use in wet / potentially explosive areas.
15. The clamping device may only be opened by the manufacturer.
16. Only clean the battery tensioner with the battery removed.

Important Safety Information for Battery Use:

1. Before using the battery, read all instructions and warnings on the charger, battery, and device.
2. Do not disassemble the battery.
3. When the battery life becomes significantly shorter, stop using the battery and replace it with a new one. Overheating, fire, or explosion can result in serious personal injury.
4. If electrolyte gets in your eyes or on your skin, immediately flush them with clean water and seek medical advice.
5. Do not try to short the battery.
 - a. Do not touch the terminals with conductive materials.
 - b. Do not store the battery in a container with other metal objects such as nails, coins, etc.
 - c. Do not expose the battery to water. A battery short circuit can cause a large current flow, overheating, and possibly a fire with subsequent injury.
6. Do not store the blower and battery in locations where the temperature can reach or exceed 50 ° C 1122 ° F.
7. Do not incinerate the battery, even if it is badly, completely damaged or worn. The battery can explode in the event of a fire.
8. Be careful not to drop or hit the battery.
9. Never use a damaged battery.

Tips for Maintaining Maximum Battery Life:

1. Change the battery before it is completely discharged.
2. Always stop tool operation and charge the battery if you notice less tool performance.
3. Never charge a fully charged battery.
4. Charge the battery at a room temperature of 10 ° C to 40 ° C 150 ° F to 104 ° F.
5. Allow a hot charger or battery to cool down before continuing to charge.

Maintenance:

1. Always make sure the tool is turned off and the battery has been removed prior to any inspection or maintenance.
2. Never use gasoline, benzene, thinner, alcohol or the like. Discoloration, deformation or cracks can result.
3. Use a slightly damp cloth with normal soap for cleaning.
4. If the battery tensioner is damaged, please send it to us.

Guarantee Terms:

We grant our customers a 6-month warranty on the battery chuck.

Customer Service Information:

The model number of this tool can be found on the nameplate attached to the motor housing. Please write down the serial number in the space below. Please always provide the following information:

Model No. _____
Serial No. _____

For the warranty processing, please send us the purchase receipt, Invoice / order confirmation as well as a detailed description of the error to info@rothschenk.de.

Certificates:

Risk assessment according to EU Machinery Directive 2006/42 / EU
Risk assessment and risk minimization DIN EN ISO 12100
CE declaration of conformity

Notes:
